



Sieva™

Large Panel Wall System



Design to impress, inspire and last.

Sieva™ Large Panel Wall System

When you're designing a space to impress, inspire, and last, specify Marlite® Sieva™. Our large-panel interior wall system for high-traffic areas blends the sophisticated look of architectural woodwork with the durability of high-pressure laminate (HPL) and medium density fiberboard (MDF)—all at a cost-effective price.

Sieva is now available with our Signature Wood Veneer, the highest premium grade of real wood veneer and rated AA in accordance with the Decorative Hardwoods Association (formerly HPVA®) standards. With our dependable, premium finishing process, you can choose from:

- Select, premium quality veneers
- Custom staining
- Custom finish options

From subtle to bold and solid colors to abstracts, we can customize these wall panels to virtually any specifications.

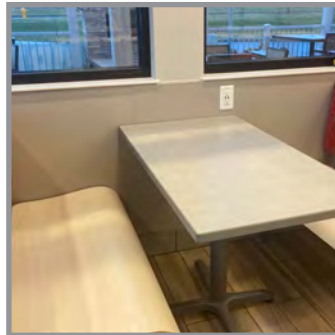


Features & Benefits



Easy Large-panel Installations

Pre-engineered panels come with all the accessories for a turnkey project.



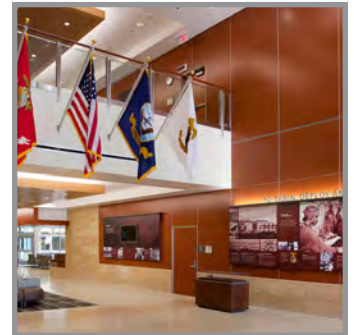
Durable for High Traffic Areas

HPL-faced wall panels with MDF core ensures durability in high-use spaces.



Exceptional Finishes

Choose from a wide selection of real wood veneer and HPL-faced panels.



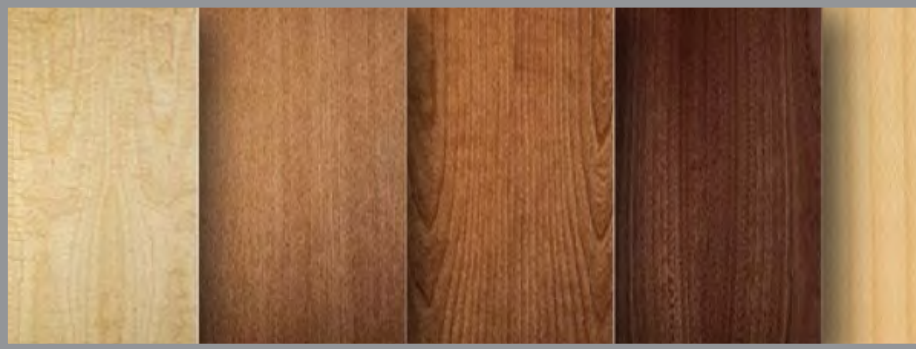
Fire-Rated Wall Panels

Multiple fire ratings to meet even the toughest requirements for public spaces.

Finish Options

Marlite's easy-to-install Sieva Wall System features large, 1/2" panels and available in standard 4' x 8' and 4' x 10' sheets. Need a custom size? We can work from your cut sheet.

Signature Wood Veneer



Marlite's Signature Wood Veneer offers a warm sophisticated look for feature walls and primary spaces.

High Pressure Laminate



HPL-faced panels with an MDF core and balancing backer are ideal for busy entryways and corridors to schools, universities, healthcare facilities, and other commercial and public buildings.

Choose from ANY Major Brands



Panel Specifications

Panel Substrate: Medium Density Fiberboard (MDF) core with High Pressure Laminate (HPL) face or Real Wood Veneer face.

Panel Thickness: 1/2"

Panel Dimensions: (Nominal Panel Sizes)

- 4' x 8'
- 4' x 10'
- Cut to Size

Fire Ratings: Class A, Class C

Reveal Options



LP551
1/16" Slim Reveal



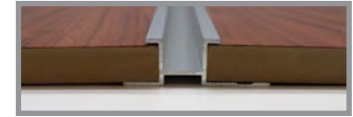
LP552
1/4" Narrow Reveal



LP553
1/2" Flat Reveal

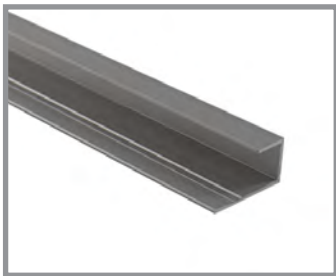


LP554
1" Recessed Reveal



Trim Options

8' trim lengths are available in clear satin anodized and black satin anodized.



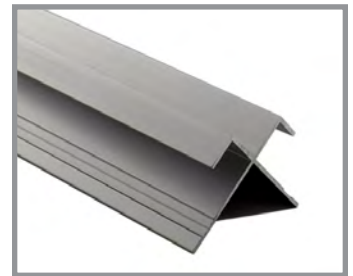
LP570 Edge Cap



LP580-A Edge Receiver



LP580-B Edge Batten



LP560 Outside Corner

Installation



Step 1: Attach LP570 Edge Cap at bottom of installation and as perimeter trim.



Step 2: Using Marlite adhesive, install the panels and selected vertical reveal.



Step 3: Secure the panels and attach desired horizontal reveal.



Step 4: Repeat, adding panels and reveal hardware and trim.



Step 5: Finish with the finely detailed look of custom millwork.



Follow us on:



www.marlite.com
800.377.1221

1 Marlite Drive
Dover, Ohio 44622

LIT-WS-202103
Effective 06/30/2022
Copyright 2022