



MDF Slatwall

- › Most finish options.
- › Outstanding load capacity.
- › Contains recycled/recovered wood content.
- › Panel inserts increase weight capacity.
- › CARB Phase II & EPA TSCA Title VI Compliant.

Weight Capacity - 🧑🧑🧑

Price - \$\$\$

Particleboard Slatwall EQ

- › Made with higher pine content to add strength.
- › Load capacity equal to or better than MDF.
- › 100% post industrial recycled/recovered content.
- › CARB exempt & EPA TSCA Title VI Compliant.

Weight Capacity - 🧑🧑🧑🧑

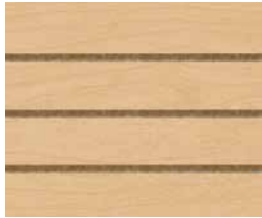
Price - \$\$

The Industry's most versatile choice in Slatwall

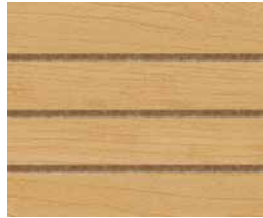
Finishes

Digitally Printed Low Pressure Melamine (LPM)

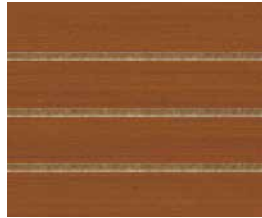
Available on MDF Slatwall only



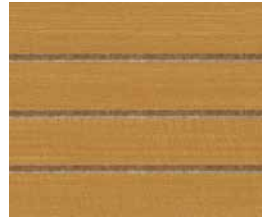
310-SKY
Sierra Maple



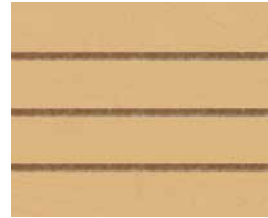
317-SKY
Alum Rock Maple



318-SKY
Windsor Anigre



319-SKY
Whittier Anigre



342-SKY
Champagne Maple



2041-SKY
Ashen Oak



2042-SKY
Smoky Birch



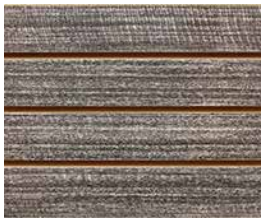
2045-SKY
Natural Swiss Oak



2046-SKY
Nebbia



2047-SKY
Sabbia



2048-SKY
Volcanna



2049-SKY
Woodward Oak



2138-SKY
Slatwall Subway



2409-SKY
Concrete Leadon



2456-SKY
Black Chrome
Diamond Plate



2653-SKY
Independence Dark



2654-SKY
Alabaster



2661-SKY
Pub Brick Light



2663-SKY
Slate Roof Grey



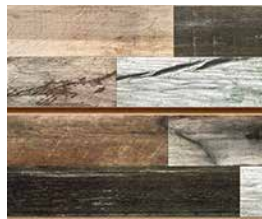
2666-SKY
Black Slate



2710-SKY
Aged Barnside



2718-SKY
Painted Planks



2719-SKY
Pallet Wood



2720-SKY
Patina White



2889-SKY
Tire Tread

Powered by:



Take your brand to the next level by adding logos and images to Slatwall. Don't settle for a boring retail space when you can create an environment that wows.

View more BlueSky™ ideas at www.marlite.com!

Low Pressure Melamine Available on MDF Slatwall and Slatwall EQ



750 Goshen White



744 Swiss Almond



751 Stone Gray



742 Tornado Gray



844 Trojan Black



687 Hard Maple



975 Cherry



874 Pearwood



692 Fine Oak



711 Linn Birch



5355 Knotted Pine



872 Mahogany



738 Brushed Aluminum

Specialty Finishes

Available on MDF Slatwall only



601 Clear
Mirrored
Acrylic



041 White
Birch
Veneer



020 Red
Oak
Veneer

Available on MDF Slatwall
and Slatwall EQ



001 Paint
Grade

Panel Sizes

Horizontal Panel Format:

4' x 8' x 3/4", 3" on center Grooves.
Long edges have half groove to
facilitate concealed joints and vertical
stacking. Short edges (48") are square
cut.

Vertical Panel Format:

8' x 4' x 3/4", 3" on center Grooves.
All edges are square cut.



4' x 8'



8' x 4'

High Pressure Laminate

Available on MDF Slatwall only

Choose from **ANY** major brand.



Solid Color Painted

Available on MDF Slatwall only

Choose from over 7,000 Sherwin-Williams paint colors using our online BlueSky™ tool at www.marlite.com.

Powered by:



Inserts Options



Vinyl Trim Strips 2000 Series

- Light Duty
- Field Installed

Available in:
White, Black



Vinyl Color Snaps™ 2000 Series

- Light Duty
- Field Installed

Available in:
**White, Black, Red,
Ivory, Platinum**



Aluminum Inserts 2000 Series

- Medium Duty
- Field Installed
- Mill Finish
- For use with metal accessories only.



Vinyl Inserts 5000 Series

- Light Duty
- Factory Installed

Available in:
White, Black



Aluminum Inserts 7000 Series

- Medium Duty
- Factory Installed
- For use with a variety of accessories.

Available in:
Mill Finish, Black.



Aluminum Inserts 1000 Series

- Light Duty
- Factory or Field Installed
- Mill Finish
- For holding glass or acrylic shelving.

Trim Options



A770 Aluminum Edge

- ½" x 1 ½" x 96"
- Mill Finish



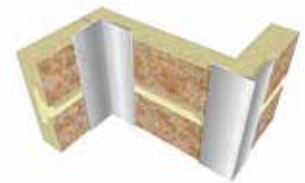
W770 Wood Edge

- 9/16" x 1" x 96"
- Poplar
- Field Finished



V67 PVC Edge

- 3/8" x 1 ½" x 96"
- Available in:
White, Black, & Grey



A760 Aluminum Inside/Outside Corner

- 1" x 1" x 96"
- Mill Finish

Installation



Slatwall panels are applied using drywall screws fastened to studs through the groove.



Follow us on:



www.marlite.com
800.377.1221

LIT-SW-202001
Effective date: 11/30/21
Copyright 2021