



Induro™ FRP

Wall Protection System



*The Ultimate in Wall Protection for
Hospitals, Senior Living and Clinics*

 **Marlite®**



Healthcare Environment *Demands*

Few walls are subjected to more potential abuse than vertical surfaces in healthcare. Carts, beds and mobile medical equipment are just a few of the potential wall hazards creating problems for hospitals, senior living facilities and clinics.

Painted drywall and rigid plastic panels simply fail to withstand the constant barrage of damaging impact, scratches and stains common in semi-critical and critical care spaces.

Damaged walls are not only unsightly, but they also increase the risk of Healthcare Associated Infections (HAI) and cost thousands of dollars to repair/replace and repaint.

**Holes in drywall
can lead to:**

**Risk of HAI
(Healthcare
Associated
Infections)**

**Repair,
Replacement
& Repainting
Costs**



The Ultimate in Wall Protection...Induro FRP

Induro Decorative Laminate FRP is an exceptionally wear resistant panel created through an exclusive process of thermally bonding impregnated surfacing materials directly to a fiberglass core.

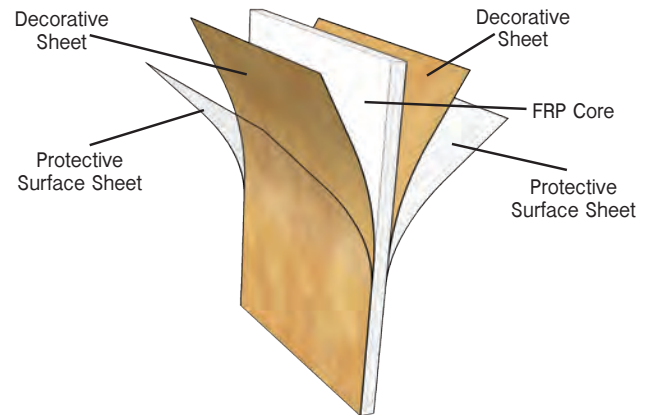
Induro FRP is superior against painted drywall and rigid plastic paneling in:

- Impact resistance
- Scratch resistance
- Stain resistance

Panel Size

47 1/2" x 95 1/2" x 3/32" (nominal)

Exclusive Panel Construction



Ideal for any healthcare space including:

- Corridors
- Patient Rooms
- Treatment Rooms
- Cafeterias
- Imaging
- Laboratories
- Restrooms
- Waiting Rooms





Proven
Durability

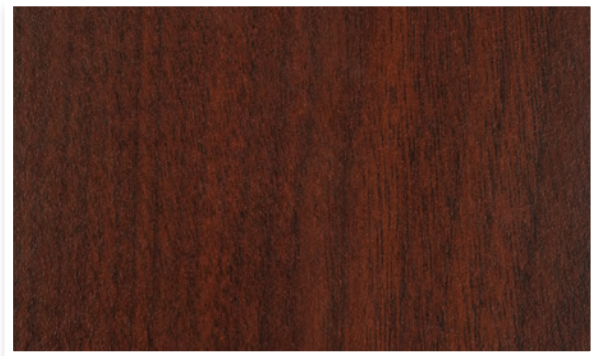
Scratch Resistant Test ASTM D2197

Marring of the competitive plastic panel material was observed to be permanent at all weight settings, representing abrasion resistance failure.

Rigid Plastic Wall Panel



Induro FRP Wall Panel



Impact Test ASTM D5420-04

Product on 1/2" Drywall

Rigid plastic wall panels -
complete structural failure



Induro FRP wall panel -
nominal damage



Easy to Clean

Like any laminate surface, Induro™ FRP is stain resistant and can be successfully sanitized using virtually any common detergent or healthcare specified cleaning agent without causing deterioration at its surface.

(Passes test against 12 harsh cleaners, 12 laboratory stains and 2 surgical markers.)

Laminate Finishes

Induro FRP is designed to match and coordinate with popular wood grains, solid colors and abstract laminates. Select any laminate finish from Wilsonart, Pionite, Nevamar and Arborite.

Induro FRP offers:

- The same outstanding surface durability as HPL.
- Enhanced impact performance from fiberglass core.
- A perfectly balanced panel and usable on either side for greater flexibility.
- Beautiful coordination with HPL table tops and case goods.
- Class "A" and Class "C" fire-ratings.



Induro Standard Palette

Faux Woodgrains



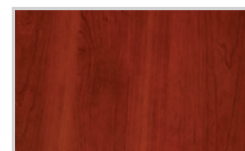
7925 Monticello
Maple



7061 Natural Pear



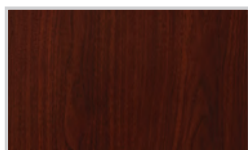
FP610 Hard Rock
Maple



7924 Biltmore
Cherry

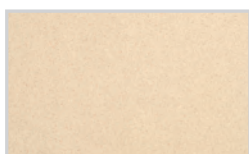


7939 Blonde Echo

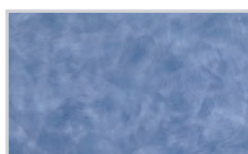


7922 Brighton
Walnut

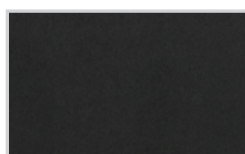
Abstract Patterns



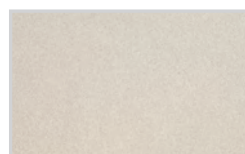
4143 Neutral Glace



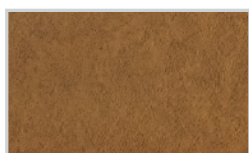
4746 Woolamai
Brush



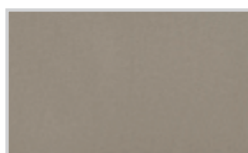
FP612 Graphic
Spectrum



4810 Titanium



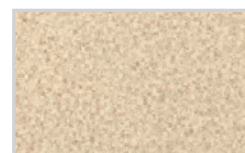
4873 Western
Bronze



4878 Pewter Mesh

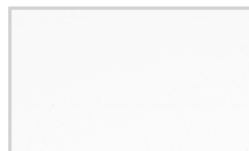


4745 Maroochy
Brush

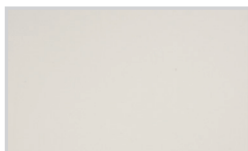


4893 Tumbled
Mosaic

Solid Colors



D354 Designer White



D381 Fashion Grey



Designer Trims, Hand Rails and Corner Guards combine to create a convenient and complete Induro FRP wall protection system.

Aluminum Trim

Length – 8'

Colors – As specified with FRP

Material – Extruded aluminum with durable finish

Designer Trim

Available in Clear Satin Anodized or Harmonizing color



Ribbed A566



Radius A567



Square Channel
A568

Harmonizing Trim

Durable painted aluminum trim molding harmonizes with any FRP finish.



Inside Corner A551



Outside Corner A560



Division A565



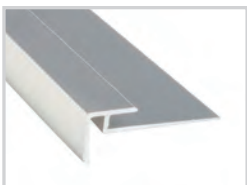
Edge A570

Anodized Trim

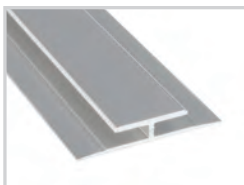
Satin, Bright Satin or Black Satin Anodized aluminum trim molding for use with any FRP finish.



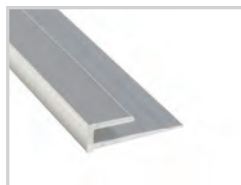
Inside Corner A551



Outside Corner A561



Division A565



Edge A570

Hand Rails

Marlite hand rails utilize three layers of impact absorption to provide superior long-term wall protection. The aluminum retainer and vinyl impact absorber are concealed by a replaceable vinyl cover and assembled with adjustable mounting attachments. This product uniquely combines the benefits of durability, visual appeal and incredible ease of installation.

- **Length**
12'
- **Height**
5.5" mX7 Flat Hand Rail
6.25" mX8 Accent Strip Hand Rail
- **Colors**
Available in Black, Brown, Grey, Taupe, Khaki Brown, Sand, Sawdust, Pale Yellow, Ivory and White. Extended colors available upon request (minimum quantities apply)
- **Material**
Aluminum mounting with textured vinyl cover (50% recycled content)
- **12' Vinyl Impact Absorber and Cover**
The vinyl impact absorbers and covers are produced using a high quality UL fire-rated material, and contain 50% recycled content. Vinyl is a popular choice for interiors and construction projects due to the material's chemical and mold resistance and its ease of cleaning.
- **4 Hand Rail Standoffs with Locking Key**
- **4 Wall Anchors**



mX7 Series
Flat Hand Rail



mX8 Series
Accent Strip Hand Rail

Corner Guards

- **Length**
4' or 8' (custom lengths available)
- **Width**
2" or 3"
- **Fastening**
Screw-on fasteners hidden by replaceable, snap-on cover
- **Colors**
Available in Black, Brown, Grey, Taupe, Khaki Brown, Sand, Sawdust, Pale Yellow, Ivory and White. Extended colors available upon request (minimum quantities apply)
- **Material**
Aluminum mounting with textured vinyl cover (50% recycled content)



mX4 Series
Corner Guard

Wall Guards

- **Length**
12' (custom lengths available)
- **Height**
4" or 8"
- **Fastening**
Screw-on fasteners hidden by replaceable, snap-on cover
- **Colors**
Available in Black, Brown, Grey, Taupe, Khaki Brown, Sand, Sawdust, Pale Yellow, Ivory and White. Extended colors available upon request (minimum quantities apply)
- **Material**
Aluminum mounting with textured vinyl cover (50% recycled content)



mX4 Series
Corner Guard End Cap



mX6 Series
Wall Surface Mount Retainer
Wall Guard





Core Colors

All hand rails, corner guards and wall guards are available in these standard colors. Additional colors are available upon request. Minimum quantities apply.

Black

Brown

Grey

Taupe

Sand

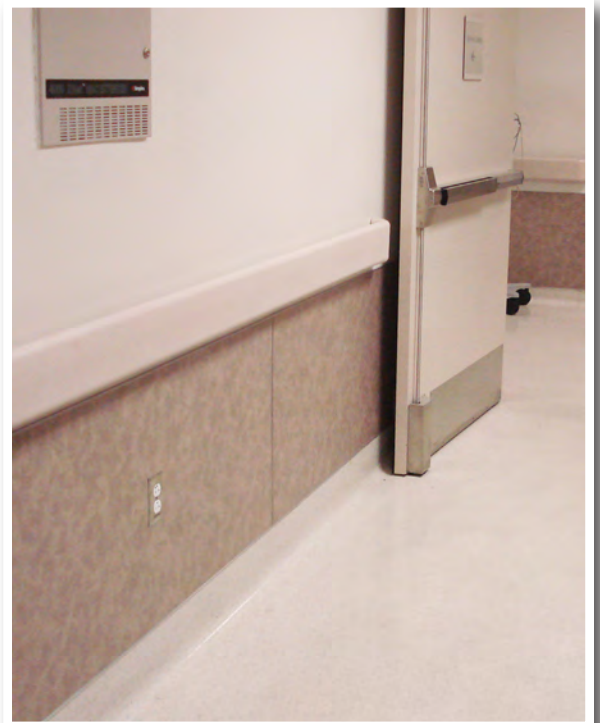
Khaki Brown

Sawdust

Pale Yellow

Ivory

White



Induro™ FRP Wall System

Easy To Install

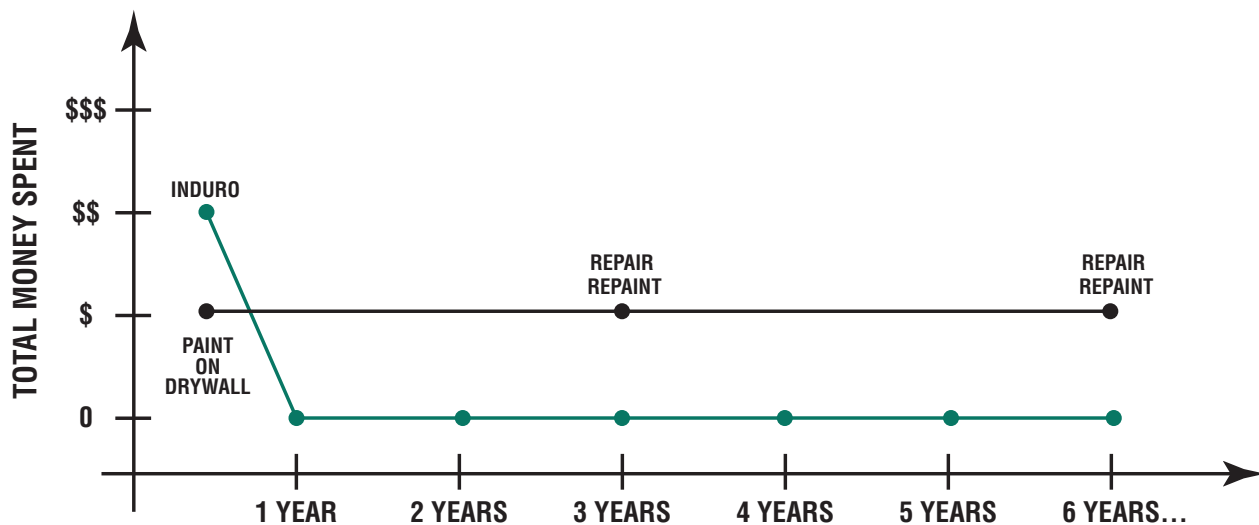
Induro FRP Panels install easily using odorless, water-based and low-VOC adhesives. For detailed installation instructions, download the complete installation guide at www.marlite.com.



Affordable

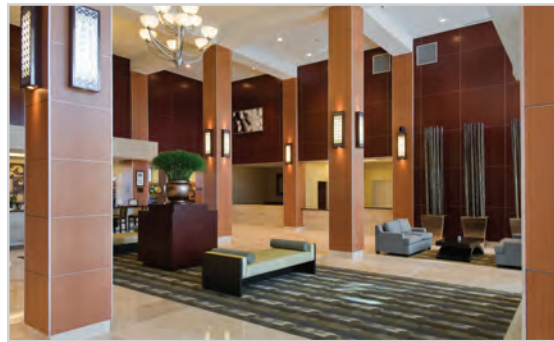
Induro FRP Panels are the easiest, most affordable way of applying laminate to walls. With virtually zero replacement/repair costs, Induro's life cycle expenditures are a fraction of the cost of painted drywall and flat rigid plastic panels. Simply put, Induro is built to last for a decade or longer.

LIFE CYCLE CHART



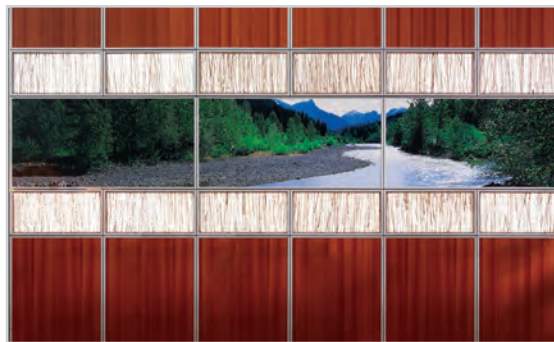
Marlite offers other dynamic products for commercial interiors.
Please visit www.marlite.com for more details.

Walls That *welcome*



Non-Critical Care Spaces: Atriums, lobbies, main corridors, waiting areas, elevator lobbies, meeting rooms, offices
Surface Systems® • Modules™ • Sieva™

Walls That *wow*



Feature Walls: Focal areas and special accent walls. Perfect for wayfinding
Myriad™ • Volta™ • Volta™ Flex

Walls That *work*



Secondary Spaces: Cafeterias, patient rooms, kitchens, restrooms, gift shops and storage
Induro FRP • Artizan FRP • Symmetrix FRP • Envue FRP • Standard FRP
Laminated FRP • Plank and Panels • Slatwall • Slatwall EQ



Dover, Ohio 44622
www.marlite.com

Ph: 800.377.1221
info@marlite.com

Form No. FR33-03161

Effective Date: 04/01/18

Printed in USA

Marlite is committed to protecting our environment and sustaining resources for future generations.

Printed on Recycled Paper