

Myriad™

Translucent Wall System



marlite
your world on a wall

Pick a winner.

Select virtually any finish or material to use within the Translucent Wall framing system to achieve breathtaking aesthetics.



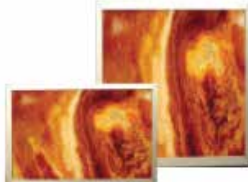
Get wired.

LED lighting components ship preinstalled in snap-fit aluminum framing, making panel-to-panel wiring unnecessary.



Mix it up.

The robust hardware accommodates panels up to 24 square feet (48" x 48") and panel thickness up to 3/4".



Grab your toolbox.

Only simple tools are needed to install wall rails and apply or change the panels.



A truly bright concept.

A Myriad of possibilities

Myriad provides an ensemble of pre-manufactured panels with choices in opaque, transparent, and translucent materials within a “snap-fit” framing system. The system features pre-installed LED backlighting components, making illumination simple and effective.



Color Temperature: 5800K

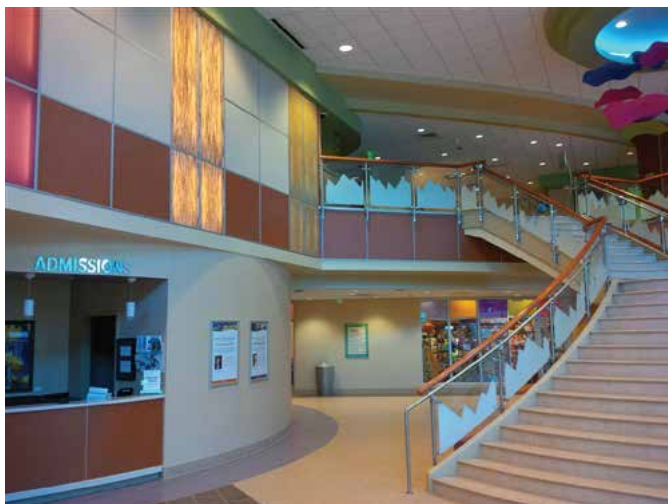
Power Adaptors: 12V Plug-in and Play Power Transformer - 1A, 12W, UL Listed

Accessories: 2/3/4/6-way Short Spider Cables connect multiple home runs to a single power supply.

System Information

Panel Sizes - 12" x 12" minimum
48" x 48" maximum

Panel Thickness - 3/32" minimum
3/4" maximum

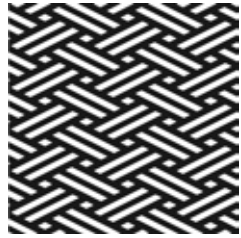
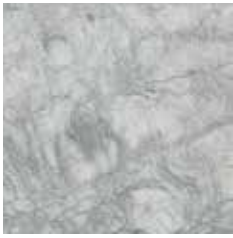


Finish Options

Digitally Printed Panels

Powered by:

Advanced Finishing System by marite™



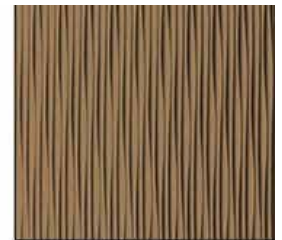
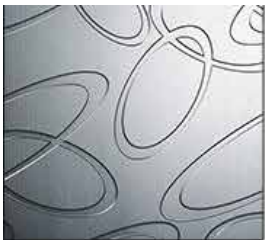
Endless possibilities with digital printing are yours to incorporate with Myriad.

Translucent Finishes



Translucent materials give a one-of-a-kind look to any space. Perfect for backlighting.

Dimensional Flex Sheets



Provide dimension to your wall in your choice of 20 patterns with 9 finish options.

Signature Wood Veneer



Over 25 species of AA grade veneer are available in 4 distinct premium finish options.

High Pressure Laminates



High Pressure Laminates are available in hundreds of finishes from the Industry's leading manufacturers.

Metals



Perforated and expanded metals, wire mesh, brushed, polished and more provide a range of effects.

Trim Options

Translucent Wall System trim selections ensure a perfect fit and finish on edges, corners, and base. Trim is available in flat profile with choice of clear satin anodized or black satin anodized finishes.



Flat Profile Frame
KL1699F



Linear Edge
L1670



Wall Roll
KL1501



Inside Corner
KL1651



Outside Corner
KL1640

Installation Guide



step 1 Proprietary wall rails install using ordinary tools.



step 2 Unique panel framing holds decorative panels with standard "snap-fit" fasteners.



step 3 Panels fit smoothly and snap securely into the wall framework.



step 4 Panels are easily installed with little effort.

Back-lit panels add a dramatic effect to any space. Light up some or all of the panels for a unique look!

To Change/Remove Panels:

A basic plastic tool is used to remove panels when change is desired.



marlite[®]
your world on a wall



LIT-MYR-202101
effective date: 01/31/21
copyright 2021

Follow us on:



www.marlite.com
(800) 377-1221