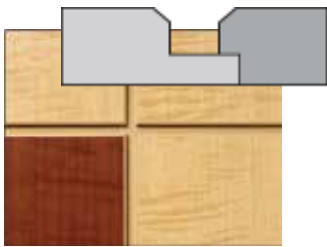
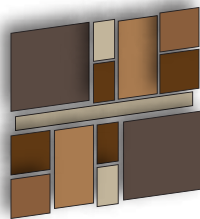


# Modules™

## Shiplap Wall System



Tongue & groove joinery eliminates the need for reveal trim.



Mix and match panel sizes and finishes to create dynamic wall configurations.

1/8" Chamfer



1/4" Square



1/8" square and 1/4" chamfered reveal options provide design flexibility.

# Mix. Match. Create.

# It's good to have options.

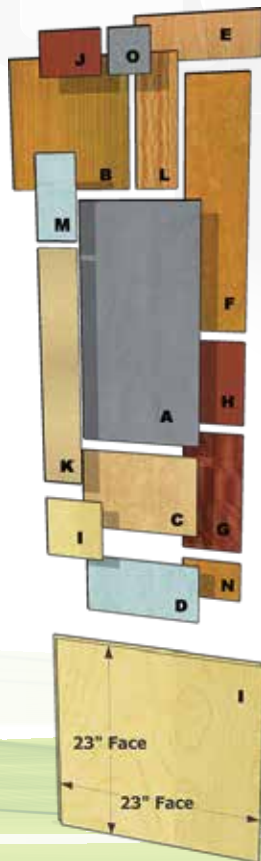
Ship-Lap is 1/2" thick panels with engineered tongue & groove joinery that fit together to form finely detailed grid patterns on walls. With fifteen standard square and rectangle sizes, Ship-Lap can be mixed and matched to create virtually limitless wall configurations.



## Panel Sizes

|   | Normal Sizes | Center-to-Center  |
|---|--------------|-------------------|
| A | 48" X 96"    | 46 1/2" x 93" *   |
| B | 48" X 48"    | 46 1/2" x 46 1/2" |
| C | 48" X 32"    | 46 1/2" x 31"     |
| D | 48" X 24"    | 46 1/2" x 23 1/4" |
| E | 48" X 16"    | 46 1/2" x 15 1/2" |
| F | 24" X 96"    | 23 1/4" x 93" *   |
| G | 24" X 48"    | 23 1/4" x 46 1/2" |
| H | 24" X 32"    | 23 1/4" x 31"     |
| I | 24" X 24"    | 23 1/4" x 23 1/4" |
| J | 24" X 16"    | 23 1/4" x 15 1/2" |
| K | 16" X 96"    | 15 1/2" x 93" *   |
| L | 16" X 48"    | 15 1/2" x 46 1/2" |
| M | 16" X 32"    | 15 1/2" x 31"     |
| N | 16" X 24"    | 15 1/2" x 23 1/4" |
| O | 16" X 16"    | 15 1/2" x 15 1/2" |

\* 96" if not profiled on top edge.





# Finish Options

## Digitally Printed Panels

Powered by:



With BlueSky™ you can put Your World on a Wall. Create a stunning visual wall with a mix of panels sizes and graphic elements. No other system on the market allows for such a wide range of creation options. Replicate virtually any material with a BlueSky™ printed panel.



Wood Grain



Graphics



Logos



Solid Colors



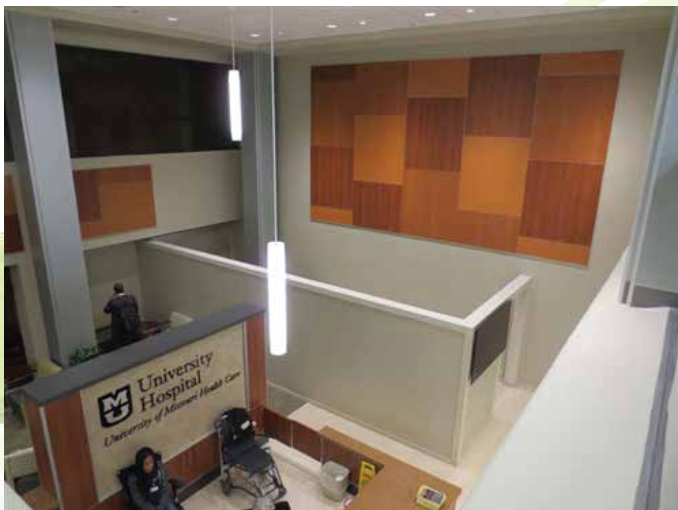
Stone

## Signature Wood Veneer



Over 25 stocked AA Grade options available. Dozens more species available by order!

Limitless wall configurations.



# Reveal Options

1/8" square reveal 



1/8" square reveal with wood veneer.



1/8" square reveal with single finish.



1/8" square reveal with single finish.



1/8" square reveal with custom reveal color.

1/4" chamfered reveal 



1/4" chamfered reveal with multiple finishes.



1/4" chamfered reveal with multiple finishes.

# Trim Options

Modules offers a selection of trim to ensure a finished look on edges, corners and bases. Trim is available in clear satin anodized and black powder coat.



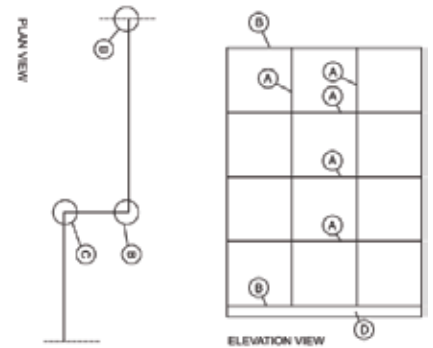
MT-570-10 Edge/Inside Corner



MT-560-10 Outside Corner



S-612-2 Base Trim



# Installation



step 1  
Lorem ipsum dolor sit amet, consectetur adipiscing elit, sed diam



step 2  
Lorem ipsum dolor sit amet, consectetur adipiscing elit, sed diam



step 3  
Lorem ipsum dolor sit amet, consectetur adipiscing elit, sed diam



step 4  
Lorem ipsum dolor sit amet, consectetur adipiscing elit, sed diam



LIT-WS-202102  
effective date: 01/31/21  
copyright 2021

Follow us on:



www.marlite.com  
(800) 377-1221