

# Symmetrix™ FRP Panels



## THE LOOK OF CERAMIC TILE. THE ADVANTAGE OF SYMMETRIX™

Hey, we all love the look of tile. But we don't love the headaches of installation, replacement, damage repair, and maintenance. And that's where Symmetrix™ FRP really shines.

|                                     | Ceramic Tile | Symmetrix™ |
|-------------------------------------|--------------|------------|
| Easy to Install                     | ✗            | ✓          |
| Installs Over Virtually Any Surface | ✗            | ✓          |
| Impact Resistant                    | ✗            | ✓          |
| Never Needs Resealed                | ✗            | ✓          |
| Easy to Clean                       | ✗            | ✓          |
| Low Cost                            | ✗            | ✓          |



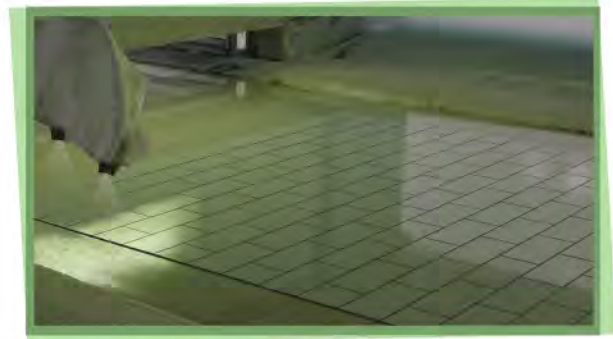
No messy demolition, no time-consuming and costly installs, and no special tools required.

**So, why choose tile...When you can choose Symmetrix™**

Symmetrix™ FRP looks like tile, installs easier than tile, outperforms tile,  
**AND costs less than most tile!**

# What in the World is Symmetrix™?

It's the look of tile on large, easy-to-install panels. Symmetrix™ is a smooth, Fiberglass Reinforced Plastic (FRP) panel, grooved with state-of-the-art CNC equipment to replicate ceramic tile. A Sani-coat sealer produces a durable surface and high-quality appearance.



## Easy Peasy.

Installs in hours, not days over nearly any surface including existing tile.



## BAM!

Fiberglass core provides serious impact resistance.



## Tough Stuff.

Won't crack like ceramic tile grout, resists stains, mold, & mildew.



## Wipe and Go.

Sani-coat Sealer makes entire surface easy to clean.

## Panel Information

4'x8'x3/32" (nominal) - Standard Size

4'x10'x3/32" (nominal) - Select Finish\*

Class III/C Fire Rating. Meets USDA/FSIS requirements.

Note:

G44 - 4"x4" grid groove configuration

G66 - 6"x6" grid groove configuration

G63 - 6"x3" subway groove configuration

## Stocked Finishes. (Quick Ship Panels)



C 100-G44 White\*  
C 100-G66 White



C 140-G44 Ivory



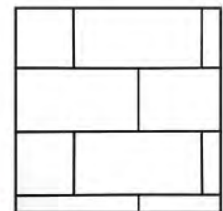
C 145-G44 Silver



C 105-G44 Black



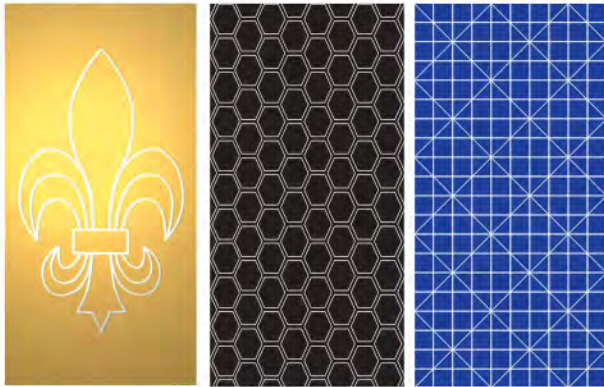
C 100-G63 White



A 916-G63 White  
with Black Scoreline

Because it's not always Black & White...  
 We've created the BlueSky™ Advanced Finishing System.

Cool, "groovy" patterns



Get into the groove with virtually any precision-routed pattern you can dream of.

Spin the color wheel



7,000+ Colors!

*The Sky is the Limit!!!*

Powered by:



Create breathtaking abstract tile prints, murals, and more! The BlueSky™ Advanced Finishing System digitally prints up to 600dpi (dots per square inch) which means even the smallest details burst in stunning clarity. With BlueSky, Symmetrix can look like nearly any surface, including wood, stone, glass, marble, and more!



Logo Overlay



Repeating Patterns



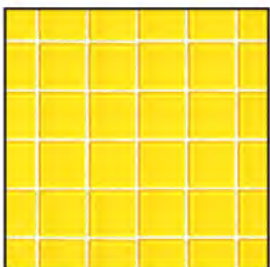
Photo Murals



Colorful Patterns



Wood Plank



Glass Tile



Tile with Accents



Marble



Shadow & Dimension



Checkerboard



# Subtle Changes = Bold Results

Replicate the texture and dimension of tile grout without physical grooves. With BlueSky™, you can easily customize even the smallest detail. Something as simple as grout color and shading can completely change the overall look of your wall.



Standard Grout

Shadow/No Shadow

Light/Dark Grout

Wide/Thin Lines

Colored Grout

## Installation: 1,2,3, then free!



FRP Panels can be easily cut with a table saw.



Apply Marlite Brand Adhesive to the back of panels.



Apply Panels to a prepared subwall.



**Free!** Enjoy the time you have left over.

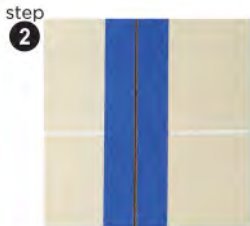


Use only Marlite approved adhesives.

## Seam Joint Installation



Place a 6 Penny spacing nail between panels.



After adhesive sets, remove nail and protect face with tape.



Place a bead of harmonizing sealant in the gap.



Using your finger, place a slight indentation in the gap.



Remove tape to reveal a grooved and matched seam joint.

For complete installation details and technical information visit: [www.marlite.com](http://www.marlite.com)

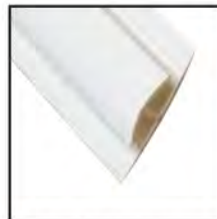
## Trim Options



M350 Inside Corner



M360 Outside Corner



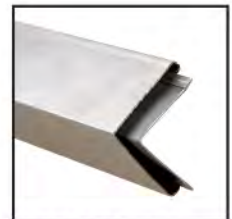
M365 Division



M370 Edge



M961 PVC Corner Molding



F560SS Stainless Corner Guard



Follow us on:



[www.marlite.com](http://www.marlite.com)  
(800) 377-1221

LIT-FRP-202001  
effective date: 05/31/20  
copyrite 2020